

FUTURE-PROOF



**Digital Value Stream
Optimization –**
Capturing production
data quickly and easily

Digital Transparent. Versatile.

Digital Value Stream Optimization

CAPTURE PRODUCTION DATA SIMPLY, QUICKLY AND DIGITALLY

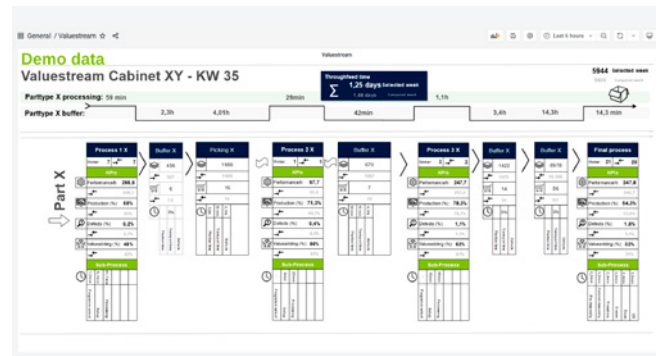
„The weakest process determines production performance.“
The problem? To identify this process in your production, you first need one thing: lots of data. Fast moving parts, very short lead times and different types of machines of different ages make production data acquisition in the wood and furniture industry a challenge. There is a simple solution to this problem: By using common digital technologies, it is already possible to capture production data regardless of machine type, manufacturer, or application area - and without an IT project or high implementation costs!

INDUSTRY 4.0 IN ACTION IN YOUR COMPANY

In digital value stream measurement, we use smartphones and Bluetooth transmitters („beacons“) that act as external sensors. The smartphone sensors measure acceleration and vibration of the machines. The data thus obtained provides information on processing time and part performance. By locating the beacons on the material stacks, dwell and transport times are continuously recorded.

TIMES, COSTS AND VALUES BECOME VISIBLE

The production data is enriched with MDA, PDA, ERP and MES data and flows together from all sources in one value stream dashboard. Based on this data, we identify redundant and cost-intensive processes and develop targeted optimization measures for your value stream. In this way, you gain transparency over your manufacturing processes: you know the actual value-added time in your production, as waste, weaknesses and potentials become visible. Through the continuous use of value stream measurement, you can also monitor the success of the optimization measures. This way, you keep an eye on your goals and can initiate new improvement processes!



All data flows together in a clear dashboard that can be customized. This means you always have an overview of your value stream.

1 YOUR ADVANTAGES

- Plug-and-play installation of hardware and software without an IT project
- A tool that evaluates your material and goods flows based on digital traces
- XaaS - everything as a service - with hardware, software and platform that you can rent as needed
- Concrete value stream optimization based on key performance indicators, e.g. inventory, labor minutes, yield, etc.
- Determination of default values for processing times for more precise production scheduling and production control as a basis for piecework wages and for cost planning
- Process costs at component level
- Scalable consulting services, customizable according to your needs

2 OUR FOCUS

- Analysis of the actual situation of the existing value stream
- Uncover weaknesses and potentials
- Identify waste
- Define targeted optimization measures (short-, medium- and long-term)
- Calculate optimization effects and set targets
- Implementing and monitoring the success of the measures
- Initiation of new improvement processes



FIND OUT MORE!

info@schuler-consulting.com

www.schuler-consulting.com

