

STORETEQ P-300/P-500

Growing together.

The all-in-one solution for your panel storage.



Unlock more potential from your processing machines

From a carpenter who uses a storage area the size of a garage, to a furniture manufacturer who produces on an industrial scale and operates a storage system to maximum dimensions – storage systems solve the logistics challenges at the beginning of the process chain.

Whether used in combination with a processing machine or as a standalone system, our storage systems increase production capacity, reduce personnel requirements, and enable orders to be processed more flexibly, faster and more economically.

YOUR SOLUTION

MORE AT HOMAG.COM



CONTENTS

- 06 STORETEQ P-300 / P-500
- 09 STORETEQ P-500 twin / P-500 dual
- 10 STORETEQ P-310 / P-510 / P-320 / P-520
- 12 woodStore storage control system
- 14 Solutions
- 16 Technical data
- 18 Service

Growing together – The all-in-one solution for your storage

Intelligent solutions from entry-level to industry

The Highlights

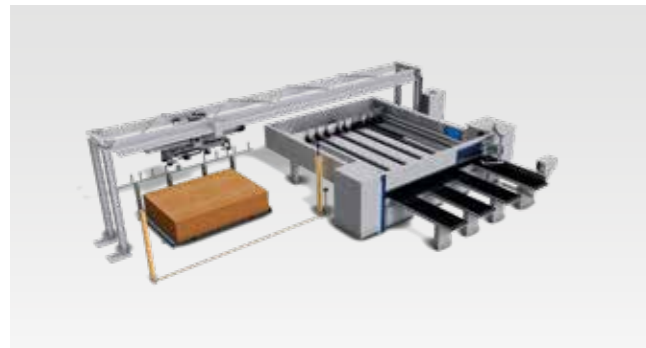
- Uniform new storage platform from entry-level to industrial
- Second-level and double-deck storage, as well as options for two-bridge storage completely available as standard solution
- Uniform woodStore control platform for the entire storage portfolio
- Coated boards with a thickness of 0.8 mm possible as standard



STORETEQ P-500

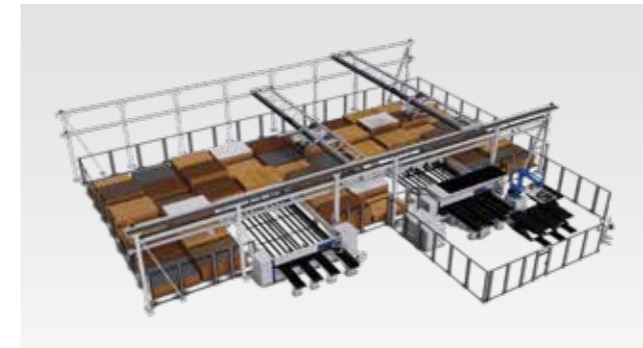


STORETEQ P-300



STORETEQ F-100

Find out more in the „STORETEQ F-100“ brochure.



P-500 DUAL



P-500 TWIN



STORETEQ P-320 / P-520



STORETEQ P-310 / P-510

woodStore control software that grows with the customer, with a constant database

“This automatic storage system allows us to save time, which is an important competitive advantage. The search time, quality and speed have noticeably improved. In particular, the material overview, offcut management and the more structured processes have already paid off many times over.”

Mario Beck – owner of the Tischlerei Mario Beck carpentry business

“No one is as reliable, tenacious and fast as our storage system. The investment pays for itself. Business is running smoothly and is much more predictable, even for snap-shots. This frees up two employees that we urgently need elsewhere. The storage system also recognizes slow-moving goods and makes suggestions about how to use them.”

Josef Eibl – owner, Josef Eibl GmbH

STORETEQ P-300 / P-500

Intelligent loading together – The all-in-one solution for your storage needs

Whether you need the widest possible range of parts, high speeds or full equipment. With the panel storage system STORETEQ P-300 / P-500, traffic routes are optimized, and material and time are saved.

STORETEQ P-300 / P-500

Optimizes the storage area and saves you valuable production space

- Intelligent standby – the machine only consumes energy when it is in motion
- Optimum material consumption down to the remaining part thanks to sophisticated material management
- Handling without extra costs – Coated sheets from 0.8 mm thickness are already possible as standard thanks to the ST 61 suction traverse.
- High flexibility thanks to ideal use of the available area even in the smallest of spaces
- Increase in productivity of up to 40 % without any added personnel requirements



The **ST 71 suction traverse** in X geometry is the ideal optional feature for the STORETEQ P-300 / P-500. The self-learning cross rail generates the data required for panel handling independently, ensuring dependable process reliability. The operator does not have to enter information into the machine.



Processing machines are connected via standardized interfaces. Regardless of whether you're placing a panel directly on the saw or connecting a processing machine to the storage system using a roller conveyor – the STORETEQ P-300 / P-500 ensures the connected processing machines add value optimally.



Great variety of materials

Whether it's handling plastic, plexiglass or laminate, coated or uncoated panels, the storage is also a true all-rounder when it comes to handling panels.

- Panel weights up to **350 kg** and panel lengths up to **5,600 mm**
- Smooth transport of even textured surfaces
- High double scissor stability for precise panel handling
- Handling of plastic panels



STORETEQ P-500 / P-510 / P-520 – flexibility and variety of materials combined in one storage system

The sturdy construction of the STORETEQ P-500/P-510/P-520 allows a great deal of flexibility when designing the system's length and width.

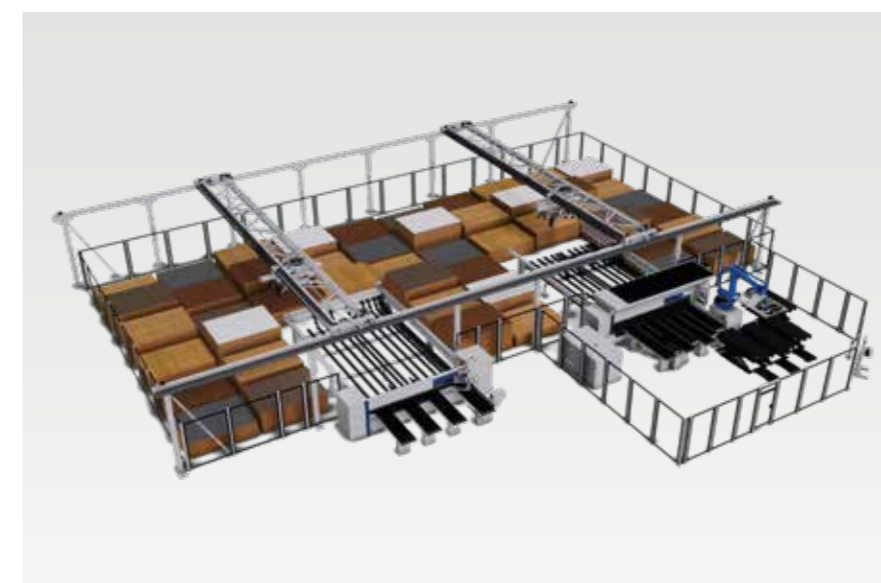
- Span widths of up to **16 m** and travel path lengths of up to **100 m**
- Controlled, low-vibration movements even in the largest version



STORETEQ P-500 twin / P-500 dual

Increase efficiency together –
The all-in-one solution for your storage

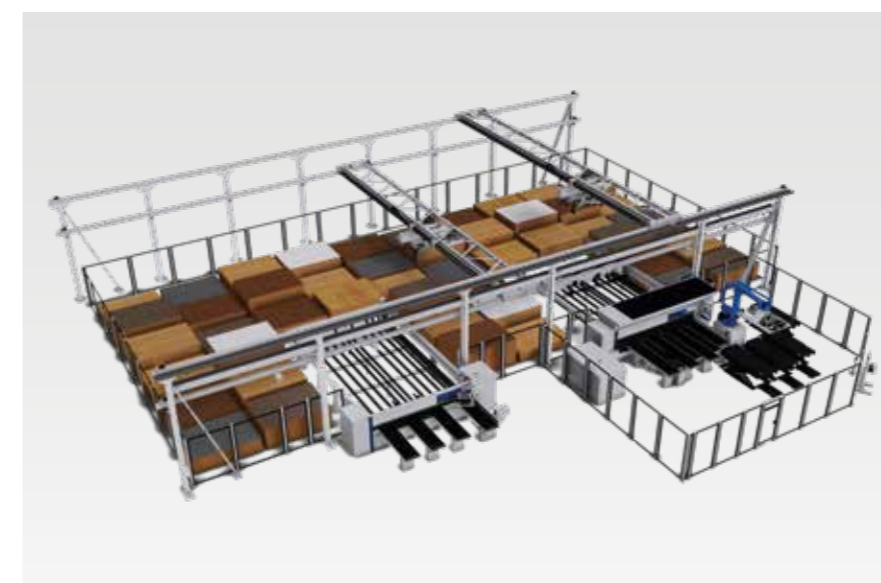
A high level of possibilities when combining with processing machines and strong capabilities for a variety of panel materials makes the STORETEQ P-500 twin or P-500 dual the all-rounder among the storage systems. This storage system offers highly efficient logistics for industry and trade.



STORETEQ P-500 TWIN

With two bridges side by side the STORETEQ P-500 twin provides even more capacity for your production.

- Faster storage and retrieval and increased sorting capacity shorten your loading and delivery times
- Simultaneous loading of machines
- Smooth and safe control via the woodStore8 storage software



STORETEQ P-500 DUAL

With its two bridges arranged one above the other, the STORETEQ P-500 dual is able to access any storage location and any processing machine with both cross beams.

- Even more flexibility
- Maximum performance with minimum space requirements

NEW: STORETEQ P-310 / P-510

NEW: STORETEQ P-320 / P-520

Save space together –
The all-in-one solution for your storage

The area storage system STORETEQ P-310 / P-510 and STORETEQ P-320 / P-520 offers the efficient solution for increase storage capacity in limited space. Instead of building new production halls, the existing hall height is converted into new storage space in an optimal and resource-saving way.



STORETEQ P-310 / P-510



NEW: Double scissor-lift with 5,000 mm lift

The new double scissor-lift enables the use of the space on the second level.

- Maximum stacking height in the second level is 2,000 mm (with flexTec saws that are stand completely under the second level maximum 1,050 mm stacking height in the second level)



STORETEQ P-320 / P-520



Securing storage and retrieval opening

Individual solutions for securing on the second level:

- Securing via protective fencing with 1m stacking distance to the protective fence
- Securing via transfer car
- Securing via a drawer



Ten important reasons to opt for the woodStore storage control system

1. Open database system enables seamless integration
2. Multi Terminal offers transparency and ergonomic operation
3. Smart Connected System: optimization, processing machine and storage are fully integrated into one cutting system
4. intelliStore: flexible storage organization that automatically adjusts to production conditions
5. Complete offcuts management prevents the buildup of offcuts
6. Forklift operator management: enables material supply separate from cutting
7. Management of outside storage is integrated
8. Easy Edit production lists: easy to change orders and sequence
9. Various storage strategies enable easy adjustment to production scenarios
10. Optimization of the production sequence enables high performance

woodStore 8. Portable, networked, user-friendly.



Mobile operation

Various functions can be controlled via mobile end devices connected within the machine's WIFI network.



User management

Personnel-controlled storage operation with a functional range of up to 40 different user rights.



Smart Connected System

Complete integration of optimization, saw and storage into one cutting system with corresponding standardized interfaces.



Email notification

In the event of any malfunctions in the operation of the storage system, the system sends an email to the email account specified.



Database access analysis

Customer database is measured for performance and logged to identify digital bottlenecks.



Smart Separation Learning

Fully automatic panel separation that requires only two panel handling settings.



intelliStore

All storage movements are monitored permanently and automatically adjusted to the current production conditions.



Integrated image database

Easy selection and assignment of panel finishes for realistic representation of the panels available in the storage.



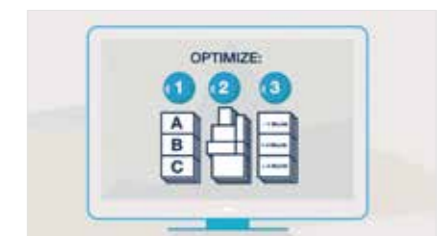
Scrap management

Automatic return of saw offcuts to storage with built-in panel measurement as part of the material intake process and management of manual offcut stocks with corresponding wizards for easy set-up.



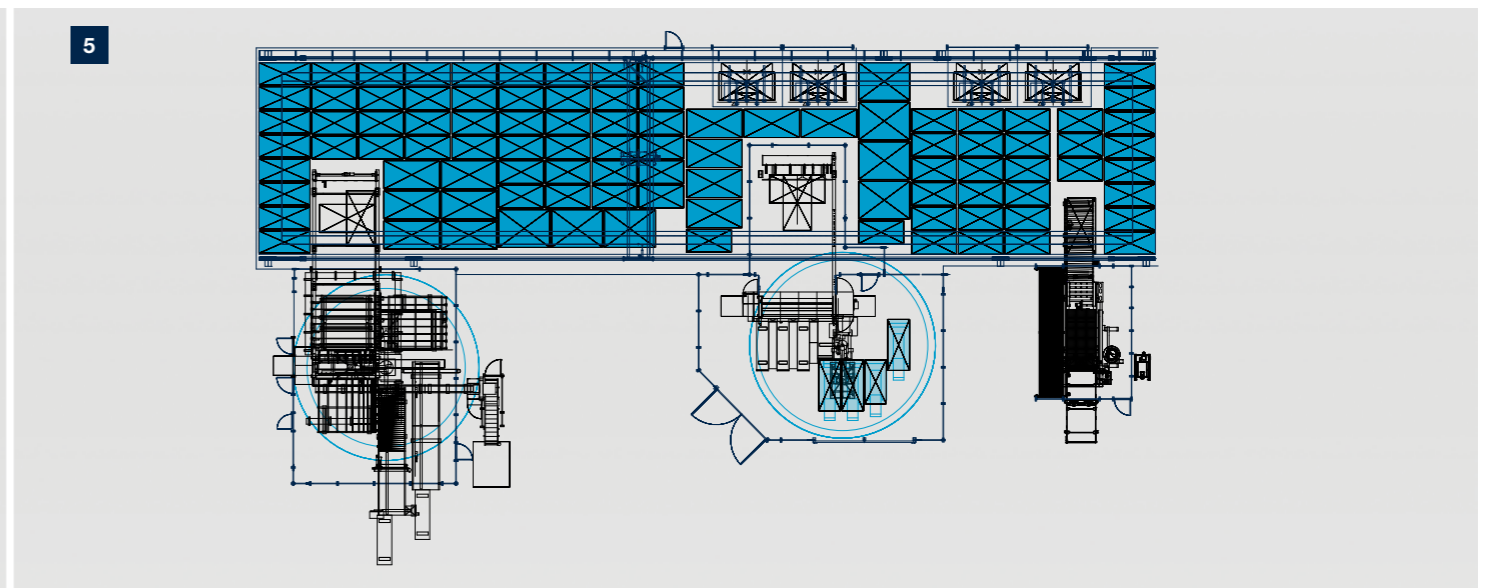
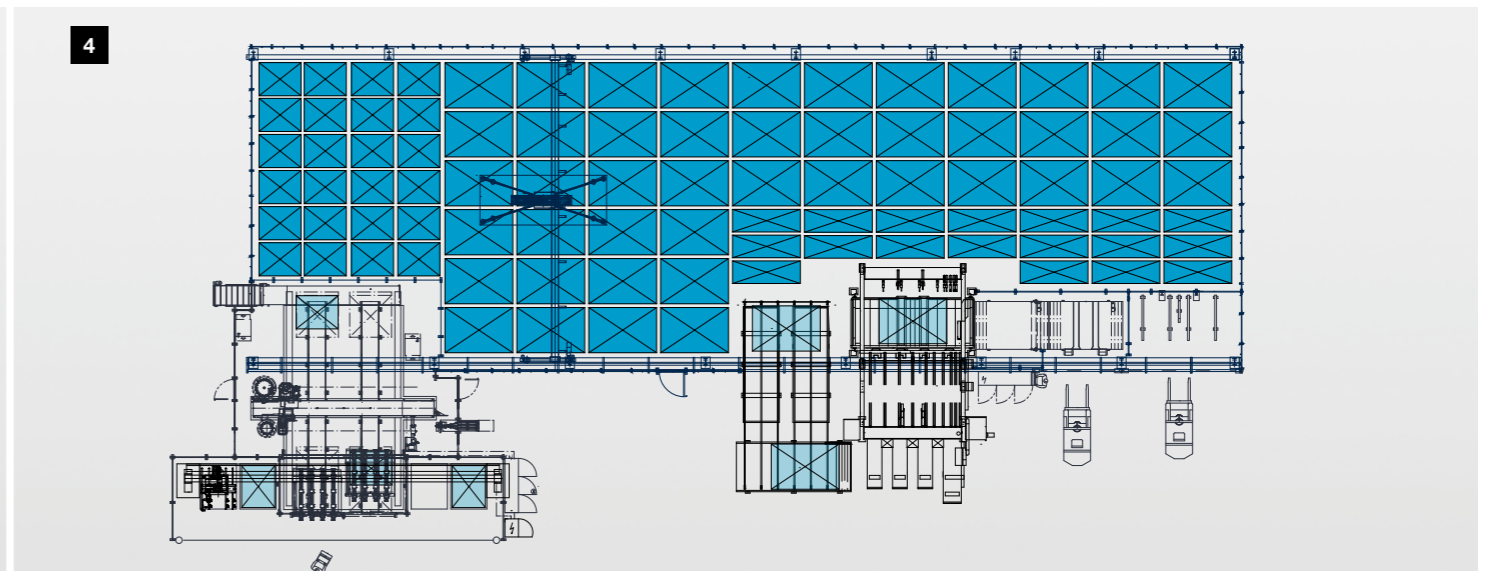
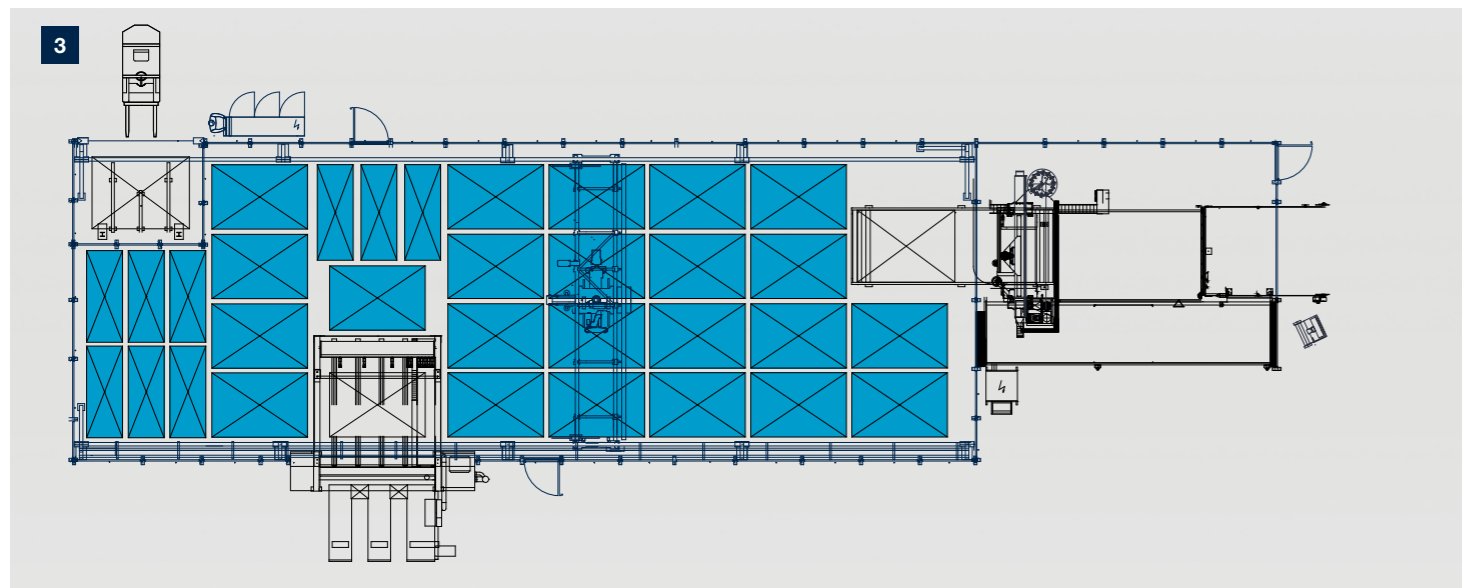
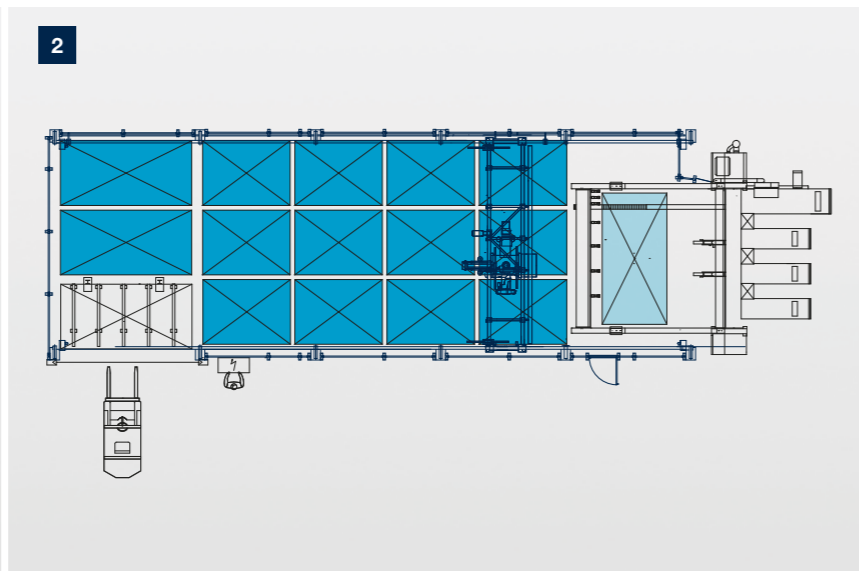
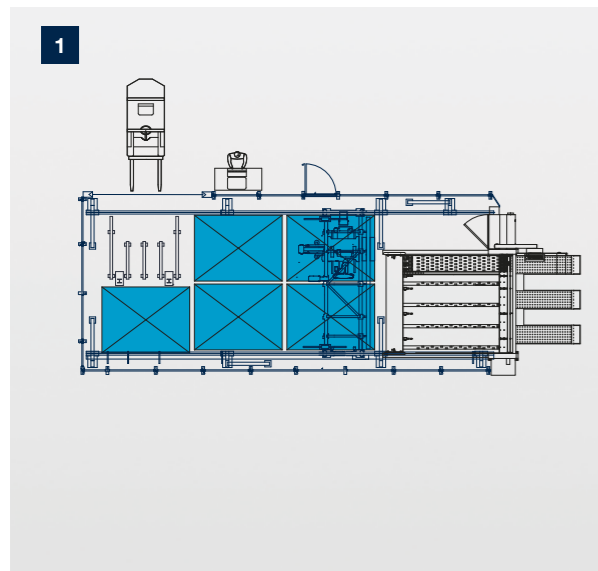
woodStore Analyzer

In a period that can be selected individually, the main functions of the storage system are examined and analyzed according to the customer's requirements in order to determine whether the customer is using the storage system optimally.



Intelligent logistics are a key to success

HOMAG storage systems are intelligent all-rounders that meet all your needs. From the smallest storage “that would fit into a double garage” to the multi-level storage system that would meet industrial requirements. Across all levels of production, the flow of material is optimized, stocks are managed in a transparent way and processing machines are used in an optimal way.



1 Storage system and saw with 5 stacking positions

Users include those working in traditional joinery

2 Storage system and saw with 14 stacking positions

Users include fitters

3 Storage system with saw and CNC processing with more than 20 stacking positions

Users include those working in trade fair and shop construction, suppliers

4 Storage system with saw and processing center with more than 30 stacking positions

Users include kitchen and furniture manufacturers working on an industrial scale

5 Storage system with saw, nesting and CNC processing with more than 50 stacking positions

Users include kitchen and furniture manufacturers working on an industrial scale

STORETEQ STORAGE SYSTEM	Basic machine	With optional extras
Span width (mm) P-300	5,000	12,000
Span width (mm) P-500	5,000	16,000
Frame length (mm) P-300	10,000	50,000
Frame length (mm) P-500	10,000	100,000
Speed		
Bridge (m/min.)	60	120
Carriage (m/min.)	80	120
Lift drive (m/min.)	30	45 without double scissor-lift 65 with double scissor-lift
Workpiece length (mm)	2,000 - 4,200	max. 5,600
Workpiece width (mm)	800 - 2,200	min. 400
Workpiece thickness, unprocessed panels (mm)	ab 6	
Workpiece thickness MDF (mm)	ab 3	
Workpiece thickness, coated (mm)	ab 0,8	
Workpiece weight (kg)	250	350
Stack height (mm)	2,100	2,500
Stack height (mm) second level	1,200 (optional 2,000, depending on configuration)	

woodStore – software module for STORETEQ	
SQL server database system	x
Multiterminal interface	x
Smart Connected System	x
Scrap management	*
Management of external storage	x
Forklift operator management	x
Flexible storage organization	x
IntelliStore optimization module	x
FlexSortPlus – pre-sorting	x
woodStore Analyzer	x
Advanced storage functions	x
Storage strategies	x
High-performance intermediate buffers	x
Rainbow pattern	x
Import, export of stack information	x
Panel allocation	x
Integrated image database	x
Multiple position optimization support	x
Stationary machine connection	*
Lifting table management	*
Headcut module	*
ERP/PPS integration	*
Stabilization function for thin panels	x
Database access analysis	x
Email alert	*
Intelligent vacuum management	x
Smart Separation Learning	x
Master data maintenance/management	x
Overview of master data	x
Easy2Work package	x
Production list module	x
Backup system	x
Report generator, import and export interfaces	x
User management	x
Mobile operation	x
Cloud-ready	x

* Additional equipment is required to make full use of the full range of functions.

LIFE CYCLE SERVICES

Improved performance, more efficient processes, faster help, assurance of availability and smarter working

TEAM & COVERAGE

Largest global service network in the industry with over 1,350 personnel.

INSTALLATION & COMMISSIONING

For a smooth start, we only let proven experts manage your setup.

OPERATION & CONTROL

After teaching your personnel the intuitive control system, our clever apps help to make the operator's life much easier.

MAINTENANCE & SERVICING

To keep things running, we're happy to take a preventative approach. You decide how often and how intensively you want the support to be. As we all know, prevention is better than the cure.

eSHOP & ONLINE ADVANTAGE

A few clicks and it's fixed. Receive exclusive advantages by ordering spare parts online, depending on market availability. shop.homag.com

HOTLINE & READINESS

When there's an emergency, we're here. Direct by phone, digitally via app or video, or with on-site support. We are close to you with over 90 regional service organizations worldwide. With more than 35,000 spare parts immediately available, we can deliver 85% of your orders fast.

TRAINING & EDUCATION

With classroom, live online or eLearning training, we offer flexible options to help you get knowledge. We conduct over 4,000 customer training courses every year, and we even have our own training centers in 19 countries

MODERNIZATION & IMPROVEMENT

Our modernization program is tailored to your machines and processes. We can evaluate your data and situation and advise you on the next step.

ANALYSIS & SUSTAINABILITY

On request, we analyze all your processes with proven tools and procedures (LeanSixSigma). We have a large, certified team of experts for this purpose.

FINANCING & CONSULTING

We offer you tailor-made financing concepts worldwide. With more than 60 years of experience and a close partner network of prominent banks and insurance companies to help us to find the right solution for you, we're always transparent and reliable in processing.

Fast support:

94% resolution rate via our hotline

Close to you:

1,350 service experts worldwide

We get things moving:

Over 1,000 worldwide spare parts shipments each day

No one else has that:

Electronic documentation on over 150,000 machines, available in 28 languages



HOMAG Group AG
info@homag.com
www.homag.com

YOUR SOLUTION